

# NU VPN Usage Manual (ver.1.12)

To use the VPN service, you need to install the module provided by F5 Networks on your PC, etc. You also need to use a dedicated service (VPN portal) to get a temporary account that is valid for 10 hours. The details will be explained as follows.

The connection method is SSL-VPN. Normally, it is not necessary to set special communication permission settings such as firewalls.

## 目次

0. Advance Preparation.....	2
0. 1. Start using THERS account.....	2
1. How to connect to VPN.....	3
1. 1. When using the Edge Client app.....	3
1. 1. 1 Install EdgeClient.....	3
1. 1. 2 VPN connection with the "Edge Client" app.....	5
1. 2. When using a web browser.....	10

# 0. Advance Preparation

## 0. 1. Start using THERS account

Multi-factor authentication VPN requires multi-factor authentication with a THERS account.

Please refer to the URL below and start using the THERS account in advance

<https://icts.nagoya-u.ac.jp/ja/services/thersaccount/ms365start.html>

Contact

<https://thersac.icts.nagoya-u.ac.jp/hc/ja/requests/new>

# 1. How to connect to VPN

## 1. 1. When using the Edge Client app

### 1. 1. 1 Install EdgeClient

(Once installed on your computer, you do not need to install it from the next time.)

Download "Edge Client" from the following location.

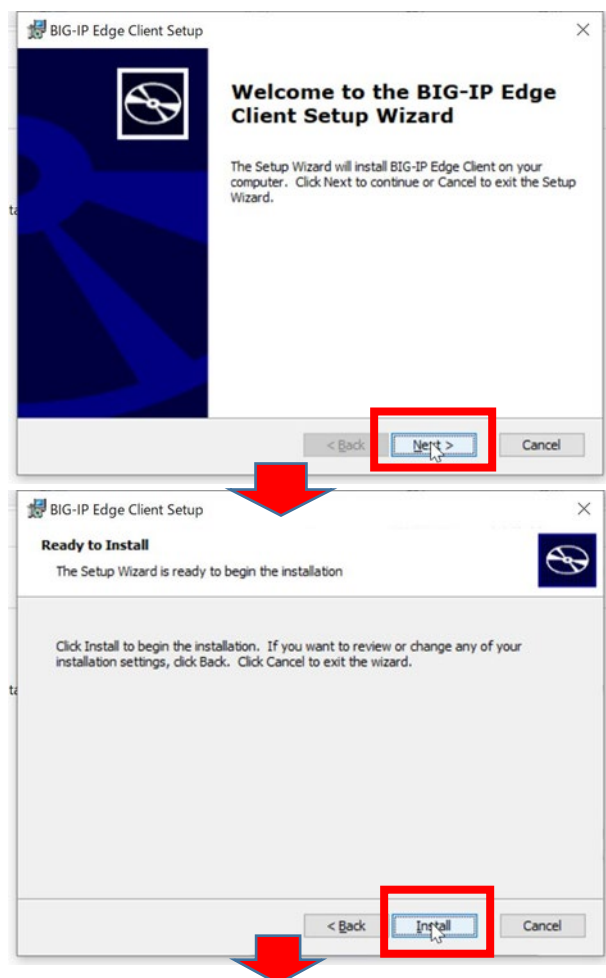
[Edge Client Download\(for Windows\)](#)

[Edge Client Download \(for Mac\)](#)

Run the installer. (.exe Or .pkg) of Edge Client.

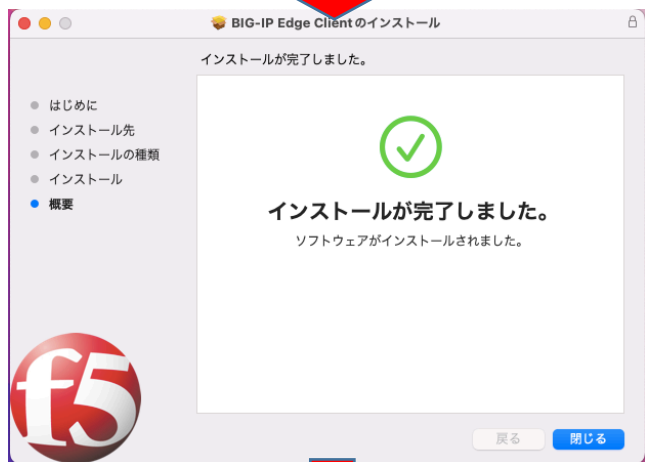
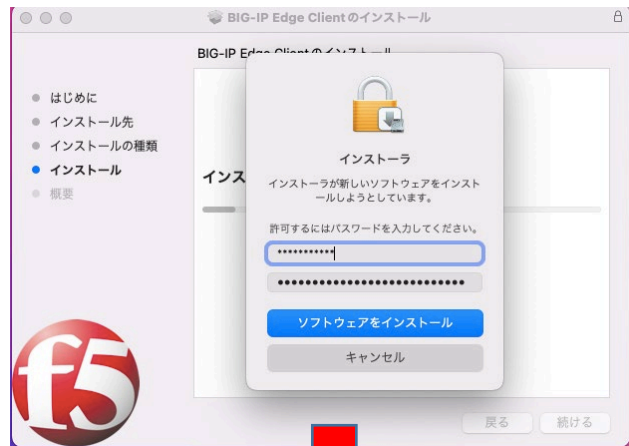
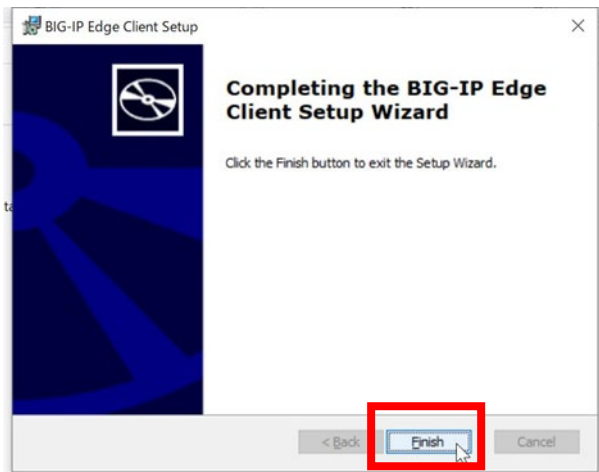
Select in the order on the right to complete the installation.: [ Next ] → [ Install ] → [ Finish ]

Windows



macOS



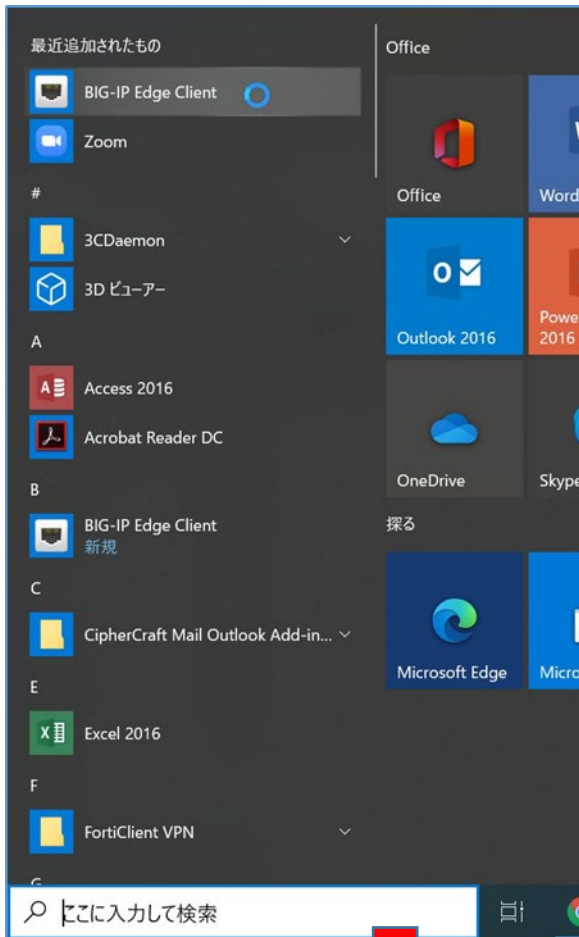


Additionally, a pop-up may appear asking you to confirm access to the folder where you executed the .pkg file, or to confirm whether you want to delete the .pkg file, but there is no problem with either.

## 1. 1. 2 VPN connection with the "Edge Client" app

Launch the Edge Client app .

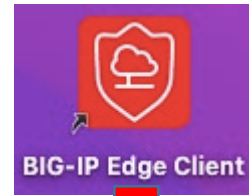
Windows



Select [Change Server]



macOS



When you start the app, a shield-shaped icon will appear on the right side of the top menu bar.

(Depending on the environment, a screen with a cautionary and a confirmation button that says "I understand the above security risks before connecting" appears immediately after startup.)

Select the destination server and connect the VPN

Server to select : **vpn-gw**

If "vpn-gw" is not displayed on the selected server, enter 「 <https://vpn-gw.nagoya-u.ac.jp/> 」 manually.

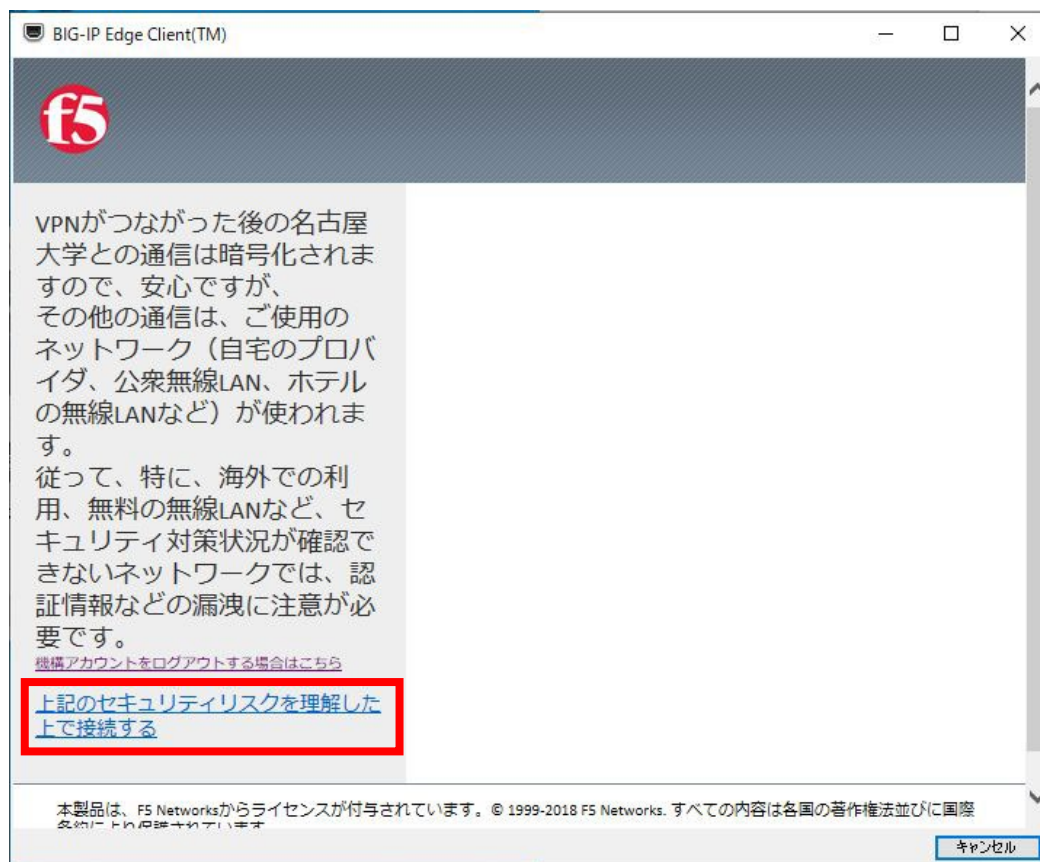


Select the connection destination and select [Next].



Select the connection destination and select [Turn on VPN].

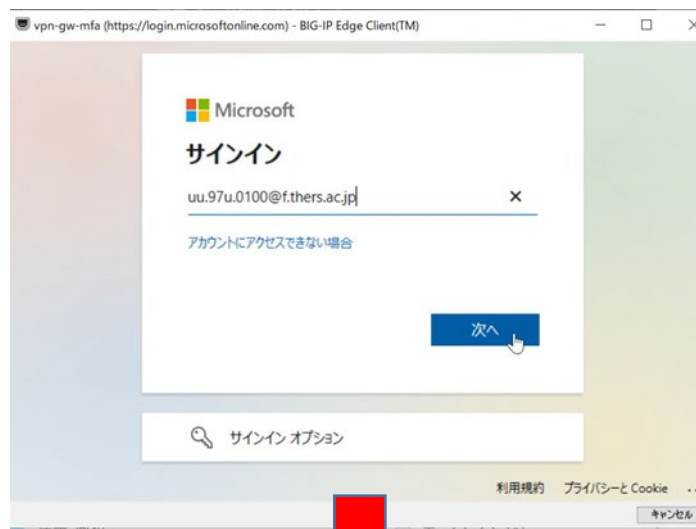
Read the cautionary statement that appears on the screen and click "I understand the above security risks before connecting."

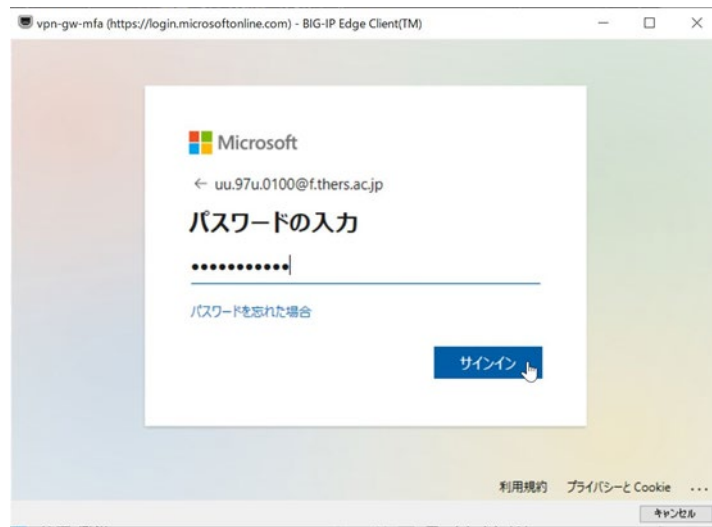


Sign in with the THERS account.

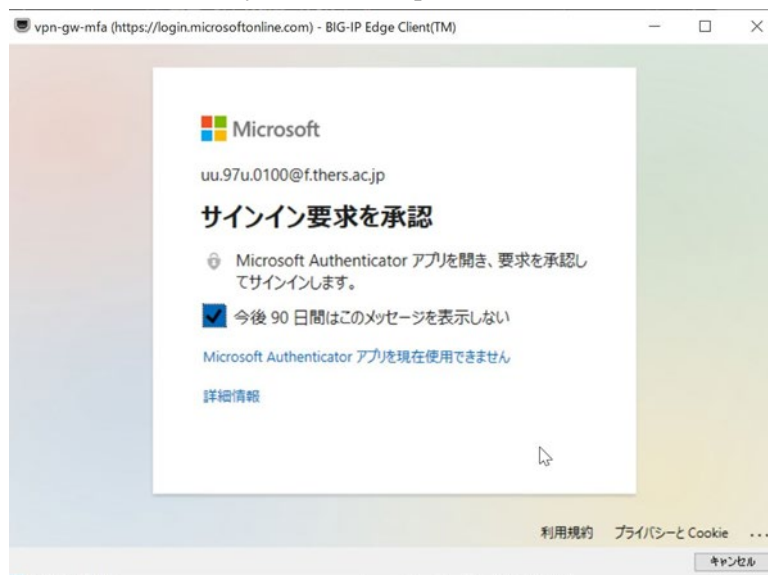
If you are signed in to the other system with the same THERS account at this time, you cannot sign in here.

Please sign out from other systems as it may happen.





A screen requesting approval from the Authenticator app will be displayed (it will disappear automatically after smartphone authentication).



Open the Authenticator app on your smartphone and select [Approve].



Make sure you are connected to the VPN.



On macOS it will be a connected icon.



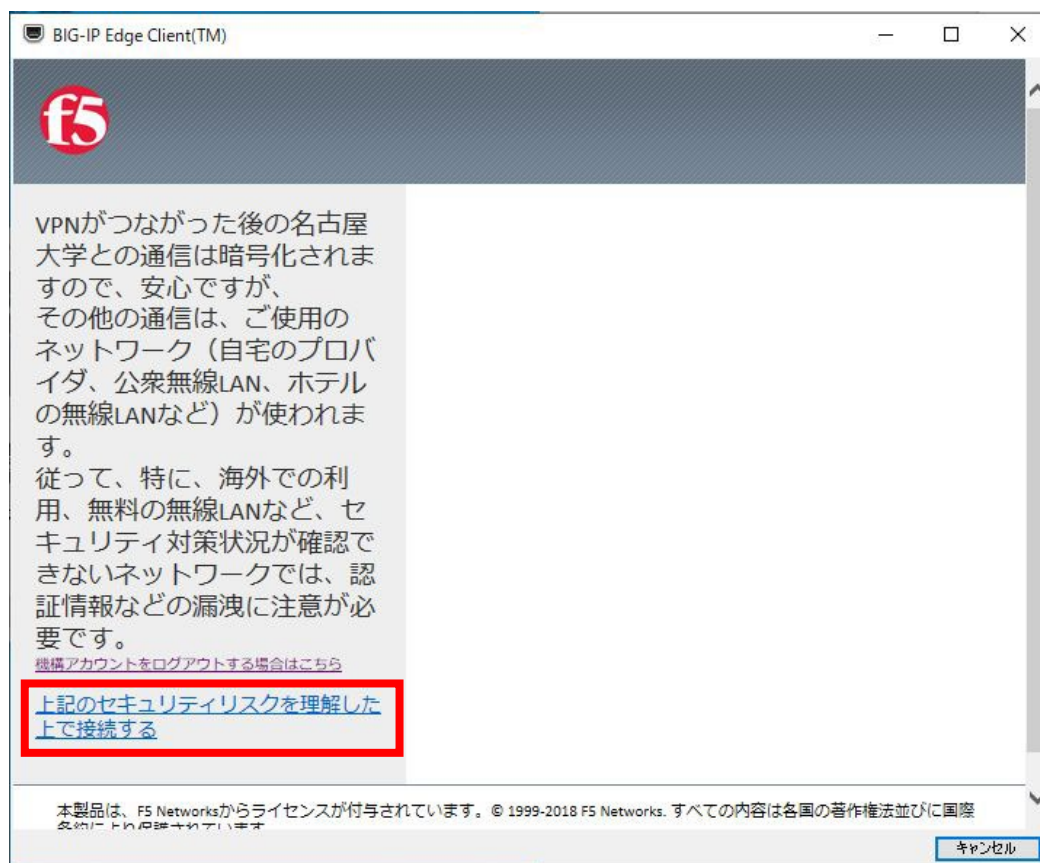
## 1. 2. When using a web browser

Only for Windows, the browser is supported. In addition, there is a possibility that the browser that could be connected up to now may suddenly become unable to connect due to the OS version upgrade.

If you are using MacOS or cannot connect with a browser, use "[Edge Client](#)" to connect.

Address to log in : <https://vpn-gw.nagoya-u.ac.jp>

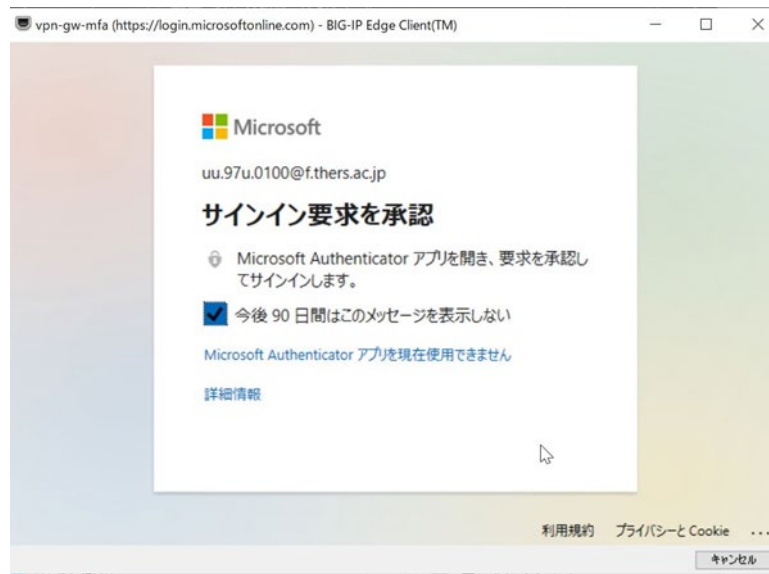
Read the cautionary statement that appears on the screen and click "I understand the above security risks before connecting."



Sign in with the THERS account.



When you see the screen asking for approval in the Authenticator app, check your smartphone.

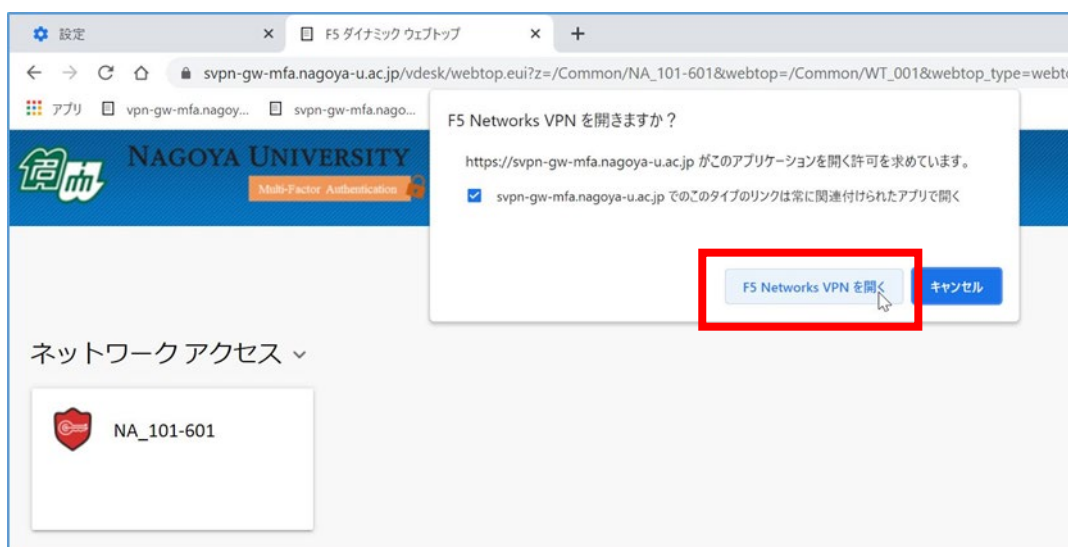


Open the Authenticator app on your smartphone and select [Approve].



Check your browser.

※ If the F5 Network VPN app linkage pop-up appears, select "Open".



Make sure you are connected to the VPN.

/Common/NA\_101-601 - https://svpn-gw-mfa.nagoya-u.ac.jp - F5 VPN

**f5**

● 接続されました

切断

トラフィック タイプ	送信	圧縮	受信	圧縮
ネットワーク アクセス				
- ネットワークトンネル	0 B	0%	0 B	0%
- 最適化されたアプリケーション	0 B	0%	0 B	0%
合計	0 B	0%	0 B	0%

+ 詳細を表示

完了